

WESTERN STATES CAT

TRACKGRIP
TRACTION • STABILITY • SAFETY

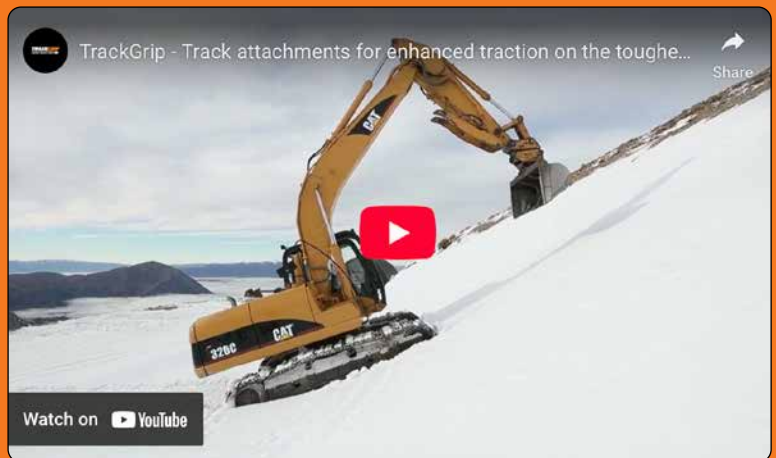


RUBBERGRIP

RubberGrip provides reliable traction and protects rubber-tracked machinery, extending track life and ensuring smooth operation on mud, slopes, and other uneven surfaces.

TRACKGRIP
TRACTION • STABILITY • SAFETY

**TOUGHER
THAN THE
TOUGHEST
TERRAIN**



www.trackgrip.com





RUBBERGRIP

DESIGNED FOR RUBBER TRACKS
AND SKID STEERS



PATENTS: CA3120069A1 | EP3883843A1 | NZ776001A1 | US20220017164A1

SOME EXAMPLE MACHINES

- JCB 300T Compact Track Loader
- Takeuchi TL8R2 Compact Track Loader
- Kubota SVL75-2 Compact Track Loader
- Caterpillar 259D3 Compact Track Loader
- Bobcat T450 Compact Track Loader
- For Machines With 16 - 18" TracksClick

CONDITIONS



ICE



SNOW



MUD

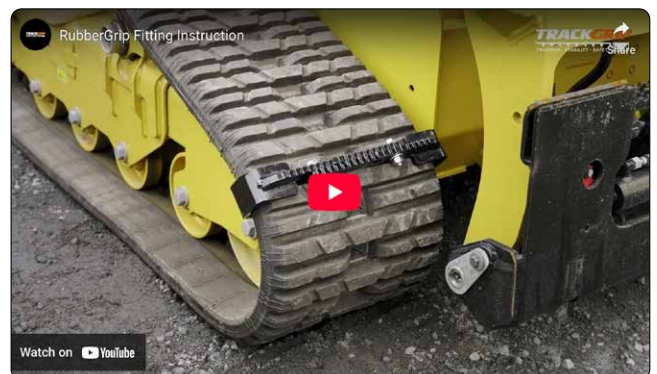


FORESTRY

OFFSET INSTRUCTIONS



FITTING INSTRUCTIONS




www.trackgrip.com

[CLICK HERE](#) TO DOWNLOAD THE FITTING INSTRUCTIONS PDF

THINGS YOU MUST KNOW

1. PLEASE PROVIDE AN OVERHEAD PHOTO OF YOUR TRACK ON THE MACHINE
Measurement of the width across the track
2. IS YOUR TRACK STRAIGHT OR OFFSET?
3. MEASURE THE TRACK DEPTH (THICKNESS)
A = Top of the lug to the bottom of the track
B = Rear of the lug to the front of the next lug
C = Valley area to the bottom of the track




TRACTION · STABILITY · SAFETY

For Rubber Tracks

Customer Name:

Phone or Email:


PLEASE PROVIDE AN OVERHEAD PHOTO OF YOUR TRACK ON THE MACHINE

Please include the width measurement of the track (as pictured above)


IS YOUR TRACK STRAIGHT OR OFFSET?

Straight



STRAIGHT




OR



OFFSET

Offset

MEASURE THE TRACK DEPTH (THICKNESS)

A Top of the lug to the bottom of the track

B Rear of the lug to the front of the next lug

C Valley area to the bottom of the track

WWW.TRACKGRIP.COM



RUBBERGRIP

Installation Instructions

1



Remove both bolts and separate grips into two pieces.

2



Place grips on either side of the track.

3



Tap lightly on each end with a rubber mallet if needed. Some skid steer models will require a packing plate on the underside lip for spacing. If the grip is too loose, add packer plate.

4



Align bolt holes. Once bolt holes are aligned, put bolts through and tighten using a wrench. Do NOT over tighten.

5



Repeat steps 1-4 for each grip, spacing them 1½ feet /450mm apart around each track. Spacing should be even.

IMPORTANT INFORMATION

- Do NOT over tighten. Do NOT use impact tools to tighten bolts.
- After confirming correct placement, perform another fit check after 10 minutes of use.
- Check periodically to ensure bolts are still tight.

TrackGrip is designed to improve stability, traction and increase safety within the limitations of your machine. We urge caution and take no responsibility for any consequences arising from the fitted machine being operated outside of the manufacturer's safety guidelines or specifications.

Patents: CA3120069A1 / EP3883843A1 / NZ776001A1 / US20220017164A1

www.trackgrip.com

