

TRACKGRIP
TRACTION • STABILITY • SAFETY

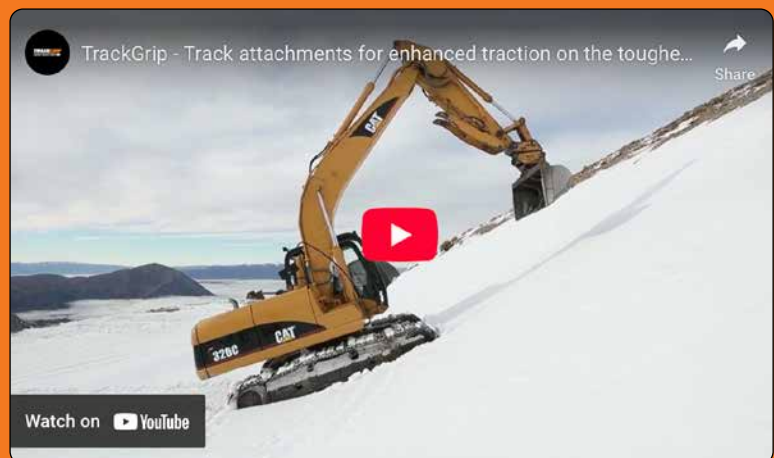


CHAINGRIP

ChainGrip offers rugged traction specifically for heavy-duty machinery on difficult surfaces like mud, rock, and steep slopes, enhancing grip and stability where conditions are toughest.

TRACKGRIP
TRACTION • STABILITY • SAFETY

**TOUGHER
THAN THE
TOUGHEST
TERRAIN**



www.trackgrip.com





CHAINGRIP

DESIGNED FOR STEEL AND RUBBER TRACKS

Multi-fit across 95% tracks



PATENTS: US12275470B2 Patent Granted | Global Patents Application Filed

SOME EXAMPLE MACHINES

- Kubota SVL75-2 Compact Track Loader:
- JCB 300T Compact Track Loader
- Caterpillar 259D3 Track Loader
- Takeuchi Mini Excavators TB290

CONDITIONS



ALL
CONDITIONS

- Supports work in all conditions
- Great for clearing car lots and driveways
- Ideal for terrains requiring less aggressive traction

FITTING INSTRUCTIONS


[CLICK HERE](#) TO DOWNLOAD THE FITTING INSTRUCTIONS PDF



www.trackgrip.com

THINGS YOU MUST KNOW

1. PLEASE PROVIDE AN OVERHEAD PHOTO OF YOUR TRACK ON THE MACHINE
Measurement of the width across the track
2. IS YOUR TRACK STRAIGHT OR OFFSET?
3. MEASURE THE TRACK DEPTH (THICKNESS)
A = Top of the lug to the bottom of the track
B = Rear of the lug to the front of the next lug
C = Valley area to the bottom of the track





For Rubber Tracks

Customer Name:

Phone or Email:


PLEASE PROVIDE AN OVERHEAD PHOTO OF YOUR TRACK ON THE MACHINE


Please include the width measurement of the track (as pictured above)

IS YOUR TRACK STRAIGHT OR OFFSET?

Straight






OR



Offset

MEASURE THE TRACK DEPTH (THICKNESS)

A Top of the lug to the bottom of the track

B Rear of the lug to the front of the next lug

C Valley area to the bottom of the track

WWW.TRACKGRIP.COM



CHAINGRIP

Installation Instructions

- ChainGrip is designed for use on EITHER rubber tracks OR steel tracks.
- ChainGrip can be used on excavators, little snow ploughs, diggers and skid steers with rubber tracks.
- For every machine all products must clear rollers and machine body.
- Chain can be interchangeable but clamps are not interchangeable between rubber and steel tracks.
- May fit some ASV tracks but not all.

1 When used on rubber tracked vehicles ensure chain has 1/2" - 5/8 /10mm-15mm of tension. When used on steel tracks do up tight.

2 Bolt hook face down when fitting.

3 Can use spring washer for short runs, use lock washer if leaving on for a long period of time. Use with caution when using on driveways and roads. Carry out a test run to ensure surfaces are not being marked.

4 For Rubber Tracks only - Remove packers if too tight otherwise leave on. Steel tracks do not use packers.

5 Clamps must clear the body, under carriage and rollers.

6 Can use your own chain by using Dee shackles.

We make a range of clamps from 1 Ton - 50 Ton and a range of chain sizes can be used. Chain supplied is to suit rubber tracks 16"-18"/400mm-450mm. This can be cut down for a smaller track width.

IMPORTANT INFORMATION

- Do NOT over tighten. Do NOT use impact tools to tighten bolts.
- After confirming correct fitment, perform another fit check after 10 minutes of use.
- Check periodically to ensure bolts are still tight.
- Ensure correct protective equipment including gloves and safety glasses are used during installation.

TrackGrip is designed to improve stability, traction and increase safety within the limitations of your machine. We urge caution and take no responsibility for any consequences arising from the fitted machine being operated outside of the manufacturer's safety guidelines or specifications.

Patents: US12275470B2 Patent Granted Global. Patent Application Filed

www.trackgrip.com

